



SOLOMON ISLANDS COUNTRY FACTSHEET



Pacific
Community
Communauté
du Pacifique

POLITICAL STATUS

 Independence : 1978


LAND AREA

 30,407.3 km²

CAPITAL

 Honiara

LANGUAGES

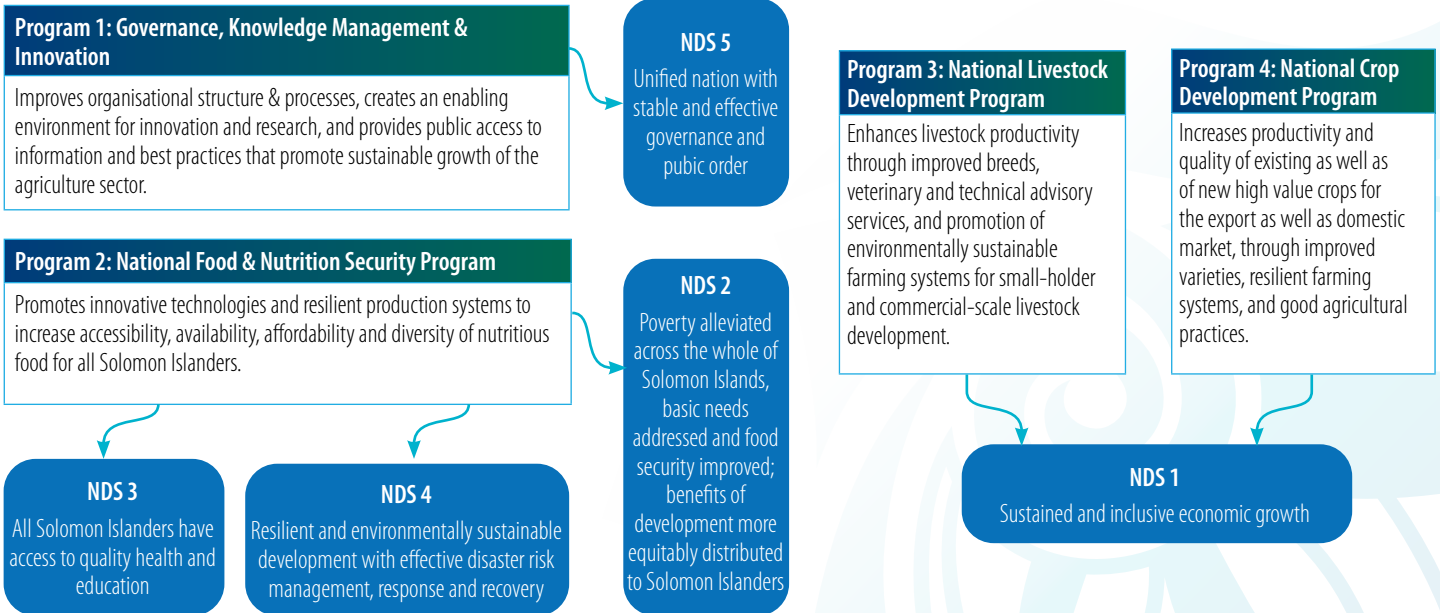
 English, Pidgin and 80 local languages and dialects

DEMOGRAPHIC INDICATORS	VALUE	YEAR
Total Population	720,956	2019
Rural Population (% of total population)	72.4%	2019
Annual Population Growth	2.6%	2019
AGRICULTURE INDICATORS	VALUE	YEAR
Agriculture sector (primary sector) contribution to GDP	33.8% (World Bank)	2022
Employment in Agriculture, Forestry and Fishery	68.4%	2019
TRADE INDICATORS	VALUE	YEAR
GDP per Capita	2,036.5 USD	2022
Total Exports of Goods and Services (GDP by expenditure share)	SI\$ 3,358 million	2022
Timber (% of total exports)	67%	2019

NATIONAL GOALS (NATIONAL DEVELOPMENT STRATEGY 2016 - 2035)

- NDS 1:** Sustained and inclusive economic growth.
- NDS 2:** Poverty alleviated across the whole of Solomon Islands, basic needs addressed and food security improved; benefits of development more equitably distributed.
- NDS 3:** All Solomon Islanders have access to quality health and education.
- NDS 4:** Resilient and environmentally sustainable development with effective disaster risk management, response and recovery.
- NDS 5:** Unified nation with stable and effective governance and public order.


SOLOMON ISLAND AGRICULTURE SECTOR AGENDA



AGRICULTURE, FORESTRY AND FISHERIES SECTOR CHALLENGES 2024/25

CHALLENGES	EFFECTS
<ul style="list-style-type: none"> • Low production and productivity of the sector • Customary land ownership often constrains investments in agriculture • Climate hazards • Outdated Forest Legislation (1969) • Unpresented logging industry • Weak economy • Climate change • Customary Land Tenure System • Research 	<ul style="list-style-type: none"> • Food insecurity, low export earnings • Limited development options and inequitable access to land • Dispersed and fragmented rural farming population • Flooding, tropical cyclones and volcanic eruptions • Total effect to the sector amounts to USD 18.41 million, of which USD 1.50 million (8 per cent) is damage and USD 16.94 million (92 per cent) is loss • Logging export exceeded sustainable rate (10 times) • Widespread re-entry logging • Increased logging on protected forest areas • Economy heavily relies on log export earnings • Extreme weather patterns • High sea level rise • Pests and diseases • No control of forest resource exploitation • Developments hindered • Poor policy directions

PRIORITIES FOR PARTNERSHIP WITH SPC LAND RESOURCES DIVISION (LRD)

SOLOMON ISLANDS AGRICULTURE PRIORITIES	SPC LAND RESOURCES DIVISION KEY RESULT AREAS	SDGS
<p>Food security Enhance food security and food safety to alleviate poverty, improve livelihoods, and increase resilience against climate change, natural and economic shocks.</p>	<p>KRA 1: Increase in availability of genetic resources at CePaCT and in countries</p>	
<p>Commercial Agriculture, Promote Agribusiness Facilitate and support the development of commercial agriculture for increased exports, import substitution, and enhanced national food security. Pursue agribusiness and livelihood ventures through diversified agriculture enterprises in collaboration with private sector and farmer organisations.</p>	<p>KRA 3: Diversification of livelihoods strategies and new value chains adopted</p>	
<p>Strengthen Biosecurity Strengthen biosecurity to protect Solomon Islands against exotic pests and diseases and improve the country's capacity to export.</p>	<p>KRA 4: Environmental food safety, Sanitary and Phytosanitary (SPS) and other voluntary standards and certification strengthened</p>	
<p>Land Use Planning & Management Support land use planning to facilitate improved productivity, safeguard land against destruction, preserve biodiversity, and to improve food security.</p>	<p>KRA 5: Resilient agricultural, land and forestry production systems</p>	
<p>Research and Development Establish the National Agriculture Research Institute to support the improvement of crops, livestock, and the marketing of high value cash crops.</p>	<p>KRA 11: Technical and scientific knowledge and expertise strengthened</p>	
SOLOMON ISLANDS FORESTRY PRIORITIES		
<p>Review the Forest Resources and Timber Utilisation Act Gazette relevant regulations, conduct country-wide awareness and trainings about the legislations and instruments.</p>	<p>KRA 2: Increased adoption of Sustainable Land Management plans, policies, approaches, and technologies</p>	
<p>Support downstream processing program in small, medium, and largescale investment: MOFR PPO2 Amplify market access through legality/Chain custody certification, enable local timber products to decent markets, and ensure legally produced timber export.</p>	<p>KRA 5: Resilient agricultural, land and forestry production systems</p>	
<p>Encourage small, medium and largescale forestry plantations Establish forest nurseries, attain annual target (200 hectares), supply seeds/seedlings to out growers, and train rural farmers.</p>	<p>KRA 2: Increased adoption of Sustainable Land Management plans, policies, approaches and technologies KRA 5: Resilient agricultural, land and forestry production systems</p>	
<p>Encourage rehabilitation schemes-reforestation and regeneration management programmes Promote enrichment planting of logged over forest land areas, enhance natural forest regeneration, and formulate appropriate silviculture regime.</p>	<p>KRA 5: Resilient agricultural, land and forestry production systems</p>	
<p>Implement recommendations of sustainable logging policy (SLP) Enforce relevant forestry subsidiary, and train forestry officers to implement legislations.</p>	<p>KRA 2: Increased adoption of Sustainable Land Management plans, policies, approaches and technologies</p>	
<p>Encourage research in forests Forest plantation development, biodiversity and conservation, community forestry, natural forest management and indigenous silviculture practices of endemic species.</p>	<p>KRA 11: Technical and scientific knowledge and expertise strengthened</p>	

INTERVENTIONS OFFERED IN SOLOMON ISLANDS, 2023

THEME	ACTIVITY
Genetic Resources Conservation	<ul style="list-style-type: none"> Standard Material Transfer Agreement (SMTA) signed with SPC to facilitate access to CePaCT's conserved crop and tree varieties. Facilitated the transfer of conserved crop varieties and safety duplication of Solomon Island's sweet potato varieties to the Genbank/CePaCT.
Environmental and Food Safety	<ul style="list-style-type: none"> SPC, Biosecurity Solomon Islands (BSI), and the Solomon Islands Biosecurity Development Program (SIBDP), collaborated to mitigate environmental and food safety risks during the Pacific Games. SPC teamed up with BSI and SIBDP to create awareness, surveillance, and implemented safety measures through border checks to ensure sanitary and phytosanitary standards.
Pacific Regional Pesticide Registration Scheme (PRPRS)	<ul style="list-style-type: none"> A Memorandum of Understanding (MOU) signed to join the Pacific Regional Pesticide Registration Scheme (PRPRS). The Scheme promotes safe, effective, and environmentally responsible pesticide use, supporting economic development and regional integration. Five agroecologically compatible crop pesticides (<i>Bacillus thuringiensis</i> (bt), <i>Bacillus thuringiensis</i> karstaki (Btk), White oil, Neem oil, Hortiguard), identified as alternatives to Highly Hazardous Pesticides (HHP) and introduced in Solomon Islands and other countries. Efficacy trial protocols conducted to guide countries in field evaluation experiments, contributing to sustainable pest management practices. Solomon Islands, and other member countries, continuously update the newly developed coconut rhinoceros beetle (CRB) information system/ database to monitor CRB more effectively. Solomon Islands supported with laboratory equipment and consumables for mass production of entomopathogenic fungus <i>Metarhizium anisopliae</i>.
Avian Flu Outbreak	<ul style="list-style-type: none"> Ministry of Agriculture and Livestock supported to investigate a viral outbreak on poultry farms. Containment support covered community awareness and engagement as well as the issuance of a disease alert to other member countries.
Plant Health Clinic Curriculum Integration	<ul style="list-style-type: none"> Successfully integrated Plant Health Clinic (PHC) modules into the Solomon Islands National University (SINU) curriculum. Agreed on further research and short-term training initiatives for PHC.
Cocoa Market Exploration	<ul style="list-style-type: none"> Solomon Islands identified cocoa as a priority for market exploration. Support provided for genetic resource alignment, product optimisation, and postharvest system enhancement. Collected soil and cocoa bean samples to test for heavy metals.
Forestry Professional Development	<ul style="list-style-type: none"> Conference hosted by Australia and New Zealand Institute of Foresters (ANZIF) on the role and establishment of national forestry professional associations.
TRAINING AREAS	TRAINING PROGRAMMES
Genetic Resource Conservation	<ul style="list-style-type: none"> Regional training on mutation breeding, seed technologies, molecular diagnostics, coconut tissue culture techniques, and allometric protocols. Regional training on aligning genetic resources, production, post-harvest and marketing opportunities.
Animal Health	<ul style="list-style-type: none"> World Animal Health Information System (WAHIS) training on comprehensive disease reporting and control strategies.
Emergency Preparedness and Response	<ul style="list-style-type: none"> Transboundary Animal Diseases (TADs) and Import Risk Analysis (IRA) training focused on emergency preparedness and response for African Swine Fever (ASF), Foot and Mouth Disease (FMD), and other TADs. Pest List Database (PLD) training for market access and pesticide registration compliance, as well as training on the enhanced PLD. Refresher training on Kobo Toolbox for CRB surveillance and containment. Performance of Veterinary Services (PVS) workshop on strengthening veterinary services and funding acquisition.
Agroecological practices	<ul style="list-style-type: none"> Training on Tools for Agroecology Performance and Evaluation (TAPE).
Pesticide Registration	<ul style="list-style-type: none"> Training on new pesticide registration modules, with a systems approach. Use of the pesticide registration toolkit. Pacific Island Pest List Database (PLD) country administrators' workshop and training.
Biosecurity, environmental safety and risk mitigation	<ul style="list-style-type: none"> Training on Import Risk Assessment (IRA) of plant products and the Sea Container Hygiene System (SCHS). In-country training for National Plant Protection Organisations (NPPOs) on mitigating pre-border and border biosecurity risks, sample collection, and drafting a Notifiable Plant Pests and Diseases List. Regional workshop on implementation of the Regional Generic ePhyto National System (GeNS) project, increasing National Plant Protection Organisations' (NPPOs) resilience and capability in safeguarding against biosecurity risks, and ensuring safe trade. Regional workshop on enhancing understanding of Non-Tariff Measures (NTMs) and Sanitary and Phytosanitary Standards (SPS) compliance and international trade promotion.
Organic Farming	<ul style="list-style-type: none"> Two trainings on building capacity for a fair and inclusive organic movement: Gender, Equity and Social Inclusion (GESI) and organic value chain analysis.
Training ratio	<ul style="list-style-type: none"> Trained 161 participants of which 45 were women.

2024 PLANNED INTERVENTIONS

1. Genetic Resources

- Conduct nutritional analysis of selected crops and crop varieties in an accredited laboratory (USP, Fiji)

2. Forestry

- Establishment of the National Platform of Forestry Professionals (PNFP)
- National consultations: Development of a business model for engineered wood products (EWPs).

3. Soil and Plant Health

- Identify country focal point for Pacific Soils Partnership
- Establish one distribution network on Integrated Plant Management (IPM) for farmers.

4. Organic Farming and Certification

- Organic Learning Farms (OLF): Establish organic learning farm networks, train farm advisors and first circle of farmers, conduct farmer-led research and provide advisory services.
- Develop a gender and social inclusion plan to guide inclusion interventions.

5. Biosecurity Training

- Biosecurity Officials (Training of Trainers): Train officials about plant pathology, entomology, and emergency response planning (ERPs), early warning systems (EWS).
- EU Standards and Marketing: Conduct training on EU standards, marketing requirements, ASYCUDA, and Trade Single Window.



MEMBERSHIP OF SPC REGIONAL PLATFORMS

- Pacific Agriculture Plant Genetic Resources Network (PAPGREN)
- Pacific Plant Protection Organisation (PPPO)
- Regional Research Agenda (RRA) - Pasifika NiuNet, Partners in Research component
- Regional Coconut Governance Board
- Pacific Soils Partnership (PSP)
- One Health
- Pacific Heads of Veterinary and Animal Production Services (PHOVAPS)
- Pacific Organic and Ethical Trade Community (POETCom)

KEY AGRICULTURE SECTOR POLICY DOCUMENTS

- National Development Strategy 2016 to 2035
- Solomon Islands Agriculture Sector Growth Strategy and Investment Plan 2021 - 2030
- National Forest Policy 2020

KEY WEBSITES

- Solomon Islands Ministry of Agriculture and Livestock (solomon.gov.sb)
- Solomon Islands Ministry of Forestry and Research (www.mofr.gov.sb)
- Biosecurity Solomon Islands (www.biosecurity.gov.sb)
- The Pacific Community (SPC) (www.spc.int)
- SPC Land Resources Division (www.spc/lrd.int)
- Pacific Data Hub (PDH) (www.spc.int)

ADDRESS

The Pacific Community (SPC)
Land Resources Division (LRD)
FNTC 2 Road, off Beaumont Road
NARERE, Suva-Fiji.
Tel: +679 3370733 | www.spc/lrd.int

FOR ENQUIRIES

LRD Helpdesk
Land Resources Division
Email: lrdhelpdesk@spc.int



Pacific
Community
Communauté
du Pacifique